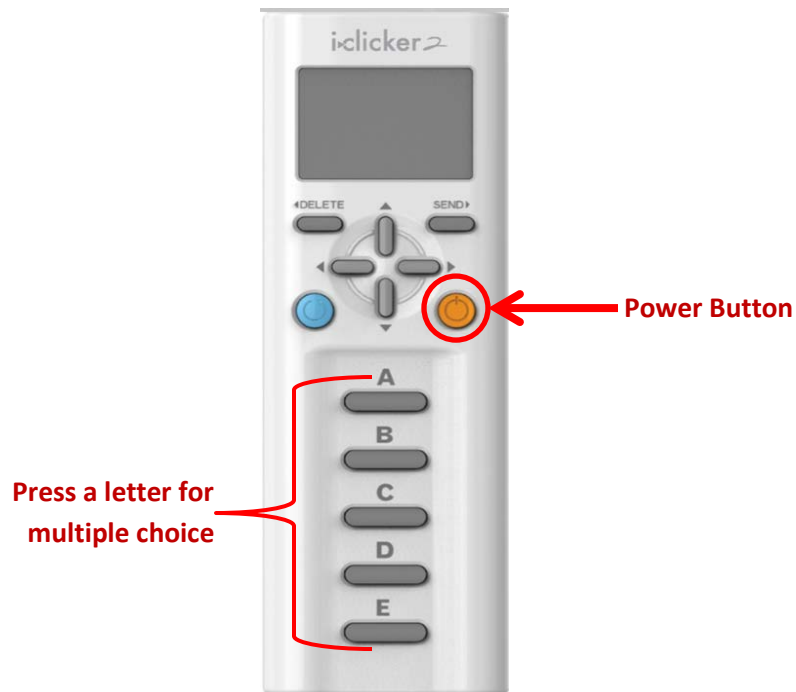


i>clicker2 for Students: Use in Class



To turn on your clicker, click on the orange power button on the right side.

Your current channel number , your clicker's remote id, and a battery icon appear in the window.



You will see a Welcome message or a customized message from the instructor.

The channel number is AA by default when you turn on the clicker for the first time.

You might need to change your channel number¹ (note: the instructor has to start a session first):

1. To do so, press and hold the orange power button
2. Press the 2 letters that your instructor tells you to (for example, BA or CD).
3. You should see a check mark.
4. These letters will be retained as your channel setting until you change them again.

To answer a multiple choice question, press a letter A through E. You do not have to press Send.

You will see a check mark appear near your response.

That means your answer was successfully received. It does NOT mean your answer is correct.

¹ When there are multiple classrooms using clickers at the same time, they need unique channel numbers. WVU will establish what letters should be used in each room.

Other Types of Questions

Refresh

If your instructor switches to a different type of question such as numeric or alpha-numeric, you will need to press the round blue Refresh button on the left side before attempting to answer.



Numeric

1. You will see 123 in the clicker window.
2. For each column, press the up or down vertical scroll buttons to select a number.
3. Press the right button to move to the next column.
4. If you go below zero, you will get a decimal point and then other mathematical symbols².
 - a. Note: the decimal point is very tiny and appears between 2 characters, not in a whole column.
5. Press the **Send** button to submit your response.
6. You can enter and submit a different response if the instructor has not yet stopped the polling.

Alphanumeric

1. You will see abc123 in the clicker window.
2. For each column, press the up or down vertical scroll buttons to select a letter.
 - a. Shortcut: to enter any of the letters A-E, use the letter button instead of scrolling.
3. Press the right button to move to the next column.
4. It will start the next column with the same letter you selected earlier.
5. Press the **Send** button to submit your response.
6. You can enter and submit a different response if the instructor has not yet stopped the polling

² In Numeric Mode, the available characters are 0, 1, 2, 3, 4, 5, 6, 7, 8, 9, . (decimal), E (scientific notation), - (minus/negative)